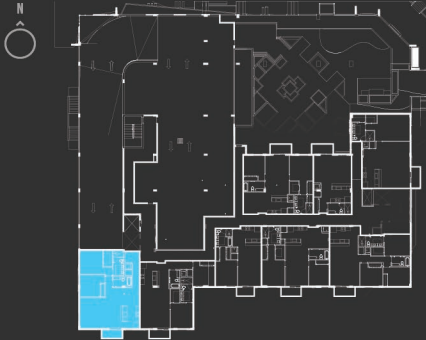


**T-1**

**2 BED  
2 BATH**

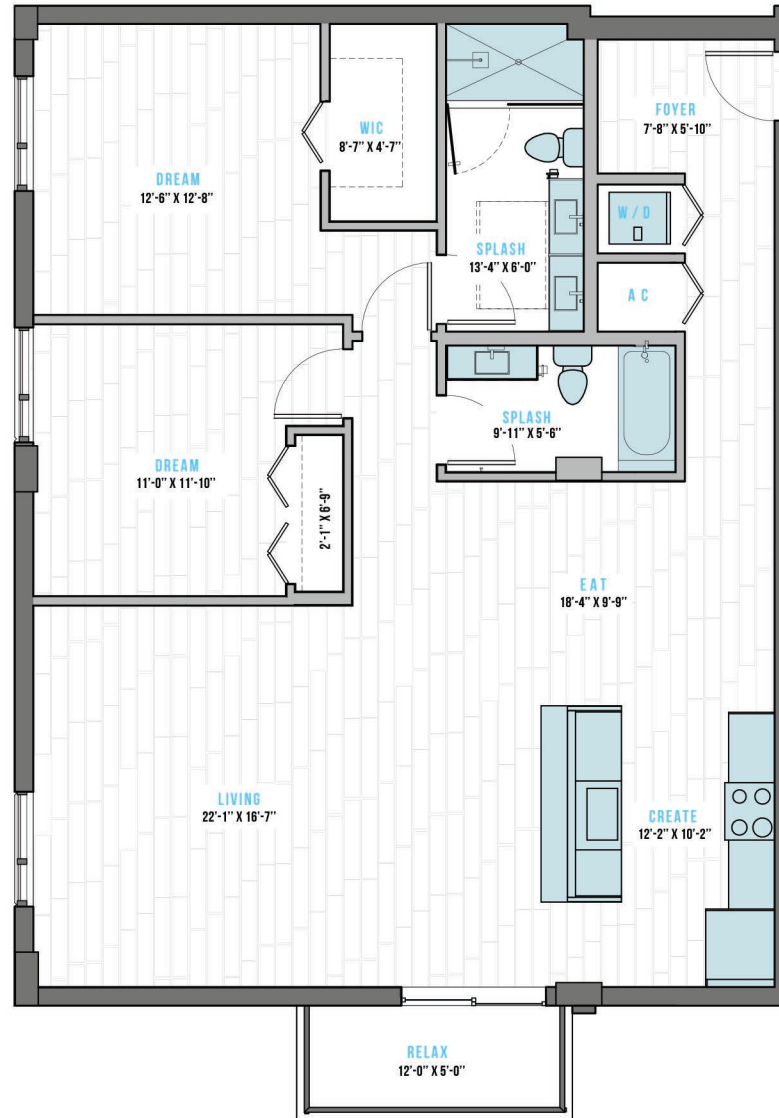
INTERIOR: 1346 S.F.  
EXTERIOR: 12'-0" X 5'-0"

**KEY PLAN**



\*Dimensions and square footage are approximate, will vary with actual construction.

**LEVEL 4**



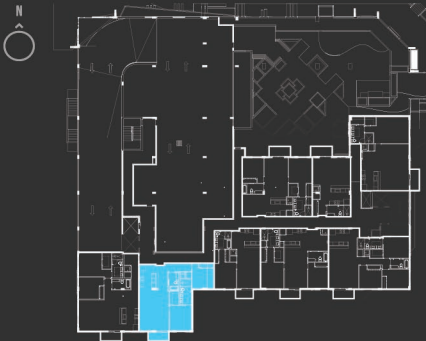
UNIT PRICE: \_\_\_\_\_  
LEVEL: \_\_\_\_\_



**T-2**  
**2 BED**  
**2 BATH**

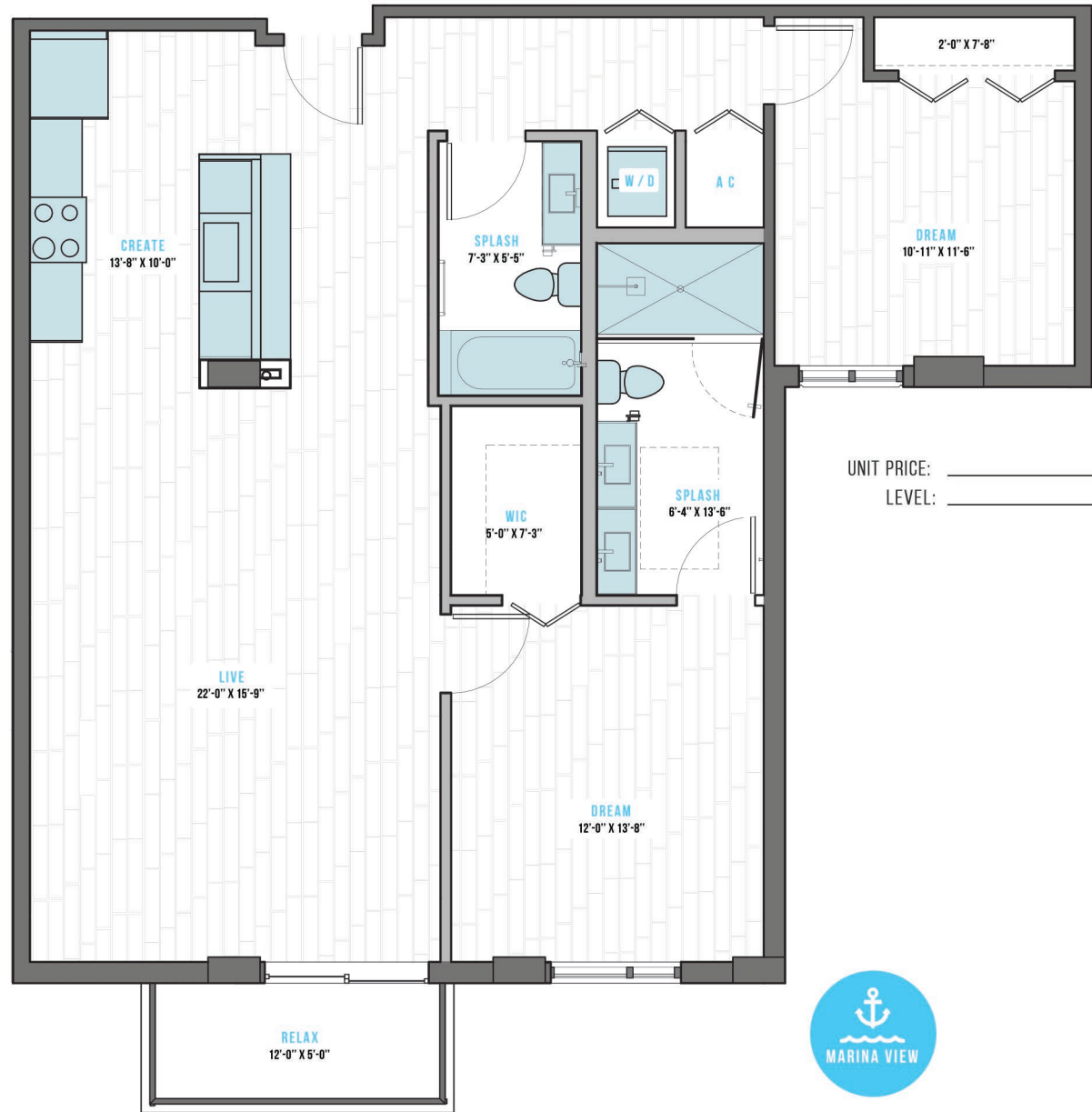
INTERIOR: 1170 S.F.  
 EXTERIOR: 12'-0" X 5'-0"

**KEY PLAN**



\*Dimensions and square footage are approximate, will vary with actual construction.

**LEVEL 4**



UNIT PRICE: \_\_\_\_\_  
 LEVEL: \_\_\_\_\_

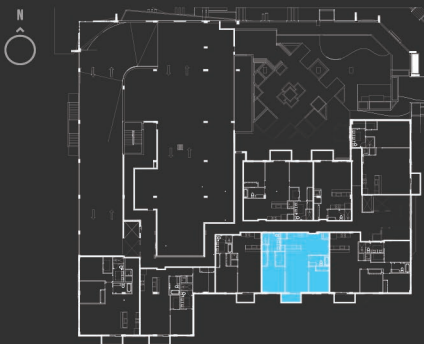


UNIT PRICE: \_\_\_\_\_
   
 LEVEL: \_\_\_\_\_

**T-3A**
  
**2 BED**
  
**2 BATH**

INTERIOR: 1166 S.F.
   
 EXTERIOR: 12'-0" X 5'-0"

**KEY PLAN**



\*Dimensions and square footage are approximate, will vary with actual construction.

**LEVEL 4,5,6 & 7**



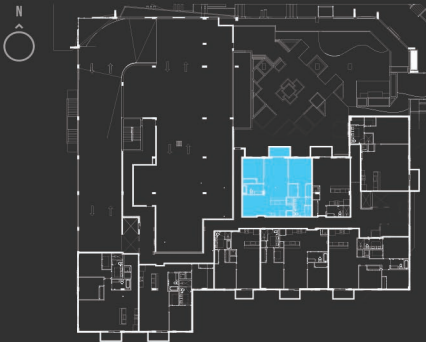
STATED DIMENSIONS ARE MEASURED TO THE EXTERIOR BOUNDARIES OF THE EXTERIOR WALLS AND THE CENTERLINE OF INTERIOR DEMISING WALLS, AND, IN FACT, VARY FROM THE DIMENSIONS THAT WOULD BE DETERMINED BY USING THE DESCRIPTION AND DEFINITION OF THE "UNIT" SET FORTH IN THE DECLARATION (WHICH GENERALLY ONLY INCLUDES THE INTERIOR AIRSPACE BETWEEN THE PERIMETER WALLS AND EXCLUDES INTERIOR STRUCTURAL COMPONENTS). FOR YOUR REFERENCE, THE AREA OF THE UNIT, DETERMINED IN ACCORDANCE WITH THOSE DEFINED UNIT BOUNDARIES, IS ~OR~ THE SQ. FT. FOR THE TWO STORY TOWNHOME UNITS. NOTE THAT MEASUREMENTS OF ROOMS SET FORTH ON THIS FLOOR PLAN ARE GENERALLY TAKEN AT THE GREATEST POINTS OF EACH GIVEN ROOM (AS IF THE ROOM WERE A PERFECT RECTANGLE), WITHOUT REGARD FOR ANY CUTOUTS. ACCORDINGLY, THE AREA OF THE ACTUAL ROOM WILL TYPICALLY BE SMALLER THAN THE PRODUCT OBTAINED BY MULTIPLYING THE STATED LENGTH AND WIDTH. ALL DIMENSIONS ARE APPROXIMATE AND MAY VARY WITH ACTUAL CONSTRUCTION, AND ALL FLOOR PLANS AND DEVELOPMENT PLANS ARE SUBJECT TO CHANGE. COPYRIGHT 2019, INVESCA DEVELOPMENT GROUP. ALL RIGHTS RESERVED.

**T-3B**

**2 BED  
 2 BATH**

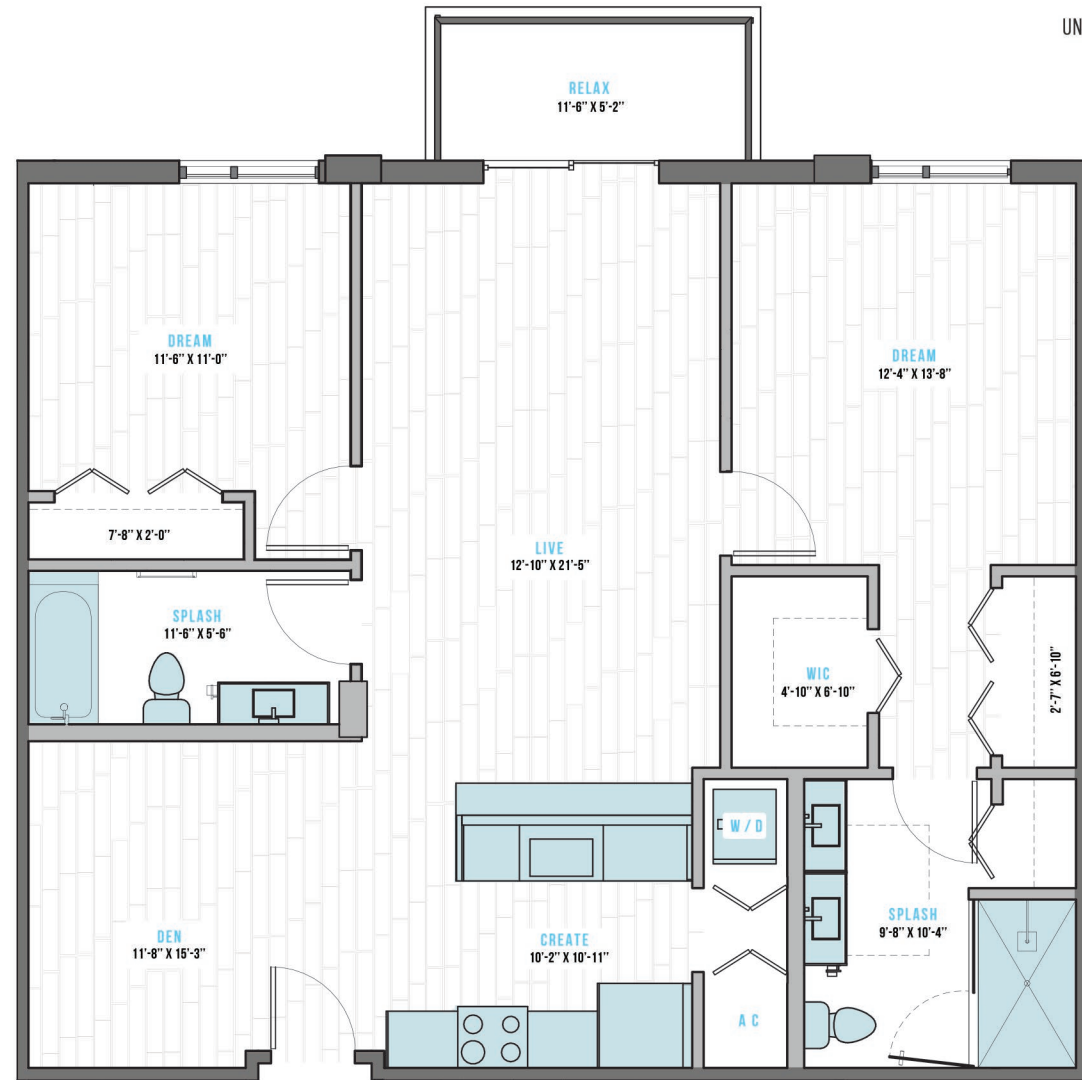
INTERIOR: 1183 S.F.  
 EXTERIOR: 11'-1" X 5'-0"

**KEY PLAN**



\*Dimensions and square footage are approximate, will vary with actual construction.

**LEVEL 4**



UNIT PRICE: \_\_\_\_\_  
 LEVEL: \_\_\_\_\_



UNIT PRICE: \_\_\_\_\_

LEVEL: \_\_\_\_\_

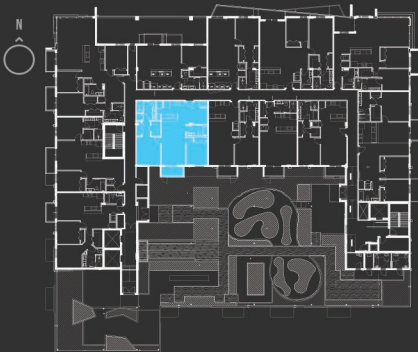
**T-3C**

**2 BED  
 2 BATH**

INTERIOR: 1173 S.F.

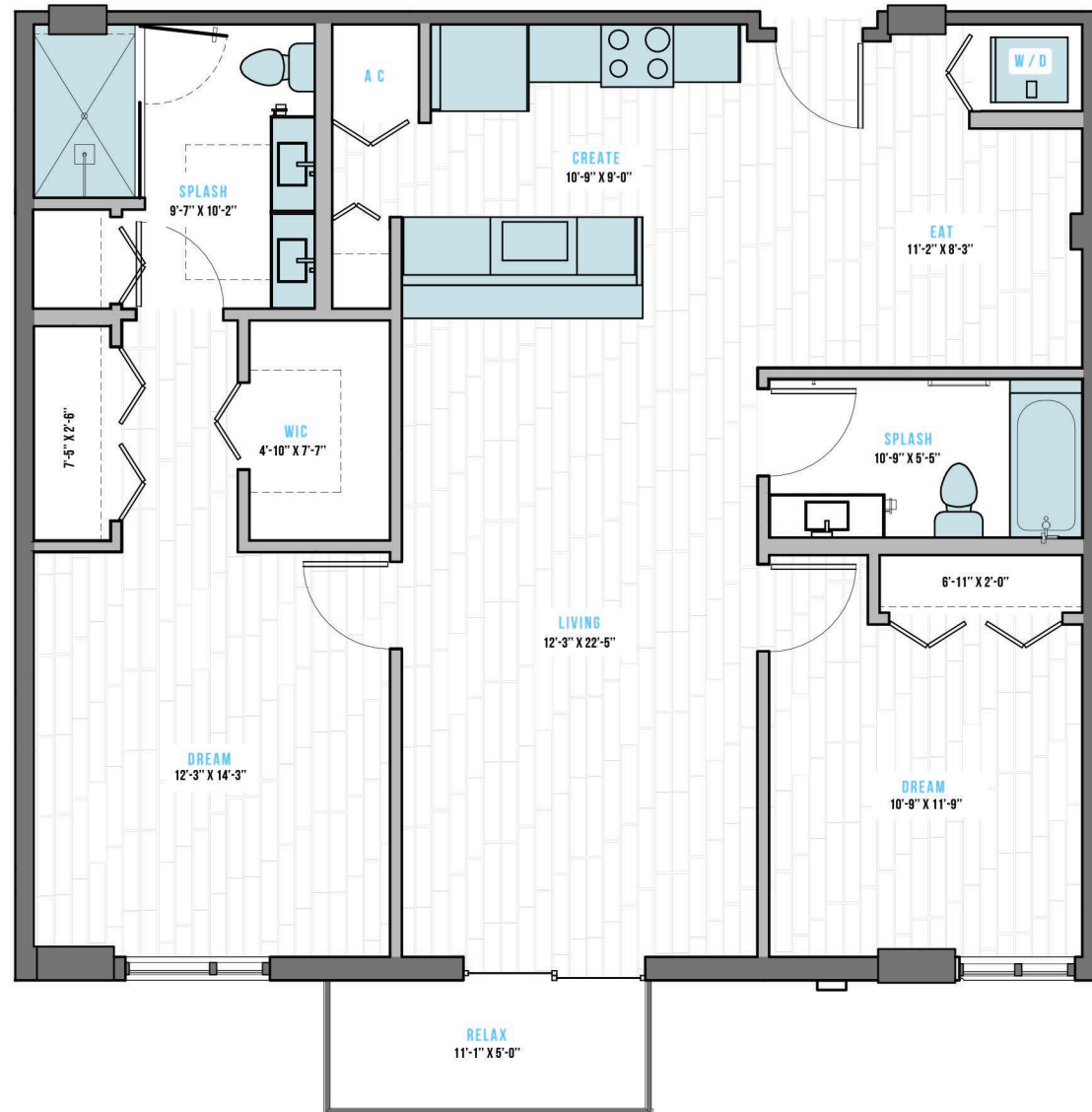
EXTERIOR: 11'-1" X 5'-0"

KEY PLAN



\*Dimensions and square footage are approximate, will vary with actual construction.

**LEVEL 8,9,10 & 11**



T-4

**2 BED  
 2 BATH**

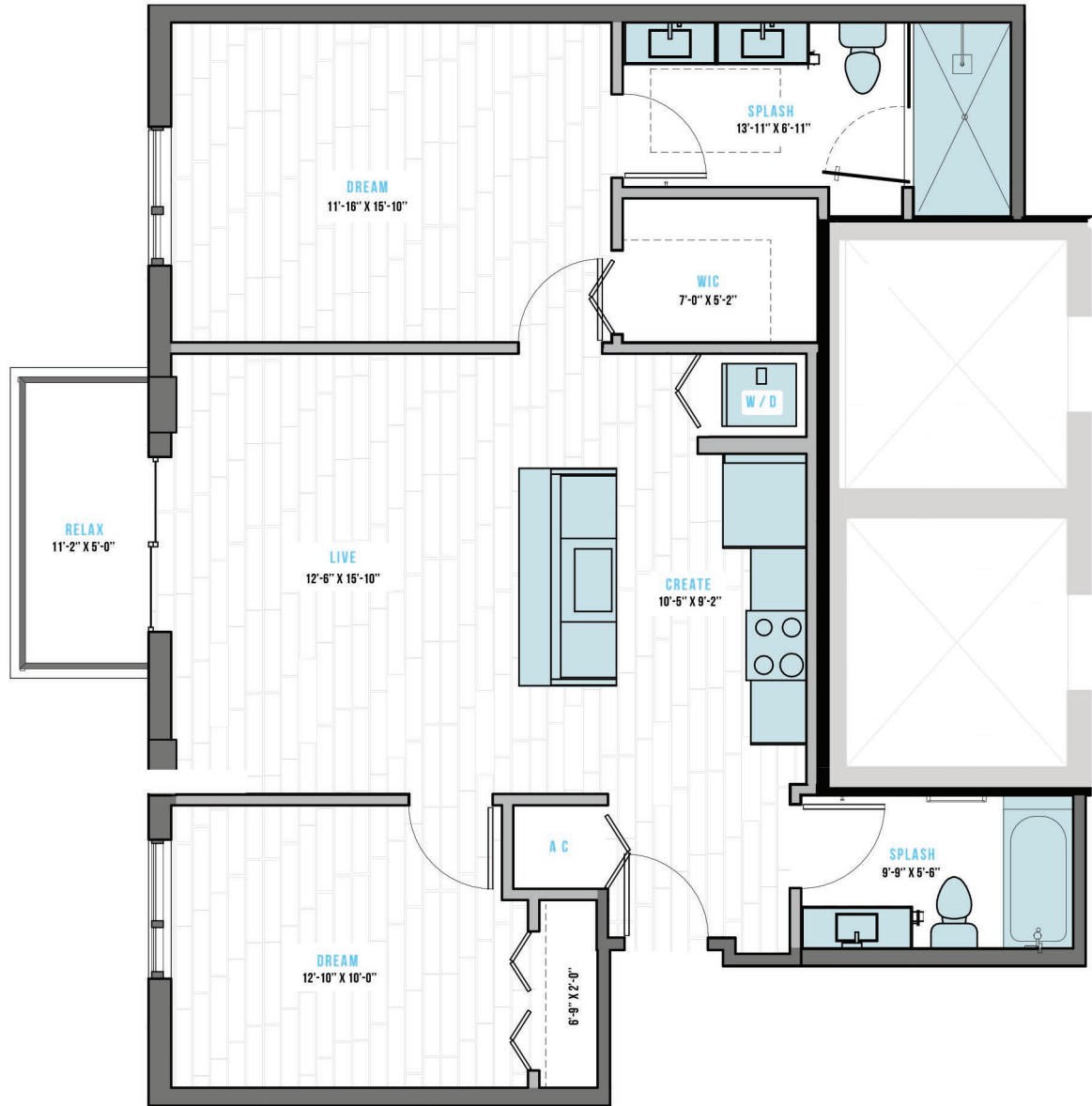
INTERIOR: 949 S.F.  
 EXTERIOR: 11'-2" X 5'-0"

KEY PLAN



\*Dimensions and square footage are approximate, will vary with specific unit or level, and may vary with actual construction.

**LEVEL 5,6 &7**



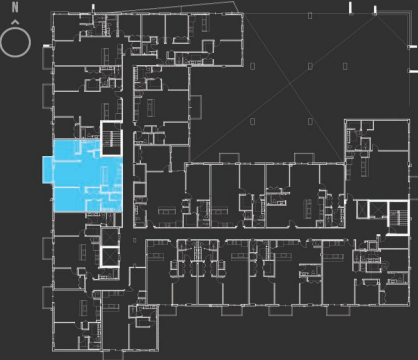
UNIT PRICE: \_\_\_\_\_  
 LEVEL: \_\_\_\_\_

**T-5\***

**2 BED  
 2 BATH**

INTERIOR: 1151 S.F.  
 EXTERIOR: 13'-6" X 5'-0"

KEY PLAN



\*Dimensions and square footage are approximate, will vary with specific unit or level, and may vary with actual construction.



**LEVEL 5 & 6**

STATED DIMENSIONS ARE MEASURED TO THE EXTERIOR BOUNDARIES OF THE EXTERIOR WALLS AND THE CENTERLINE OF INTERIOR DEMISING WALLS, AND, IN FACT, VARY FROM THE DIMENSIONS THAT WOULD BE DETERMINED BY USING THE DESCRIPTION AND DEFINITION OF THE "UNIT" SET FORTH IN THE DECLARATION (WHICH GENERALLY ONLY INCLUDES THE INTERIOR AIRSPACE BETWEEN THE PERIMETER WALLS AND EXCLUDES INTERIOR STRUCTURAL COMPONENTS). FOR YOUR REFERENCE, THE AREA OF THE UNIT, DETERMINED IN ACCORDANCE WITH THOSE DEFINED UNIT BOUNDARIES, IS + OR - THE SQ. FT. FOR THE TWO-STORY TOWNHOME UNITS. NOTE THAT MEASUREMENTS OF ROOMS SET FORTH ON THIS FLOOR PLAN ARE GENERALLY TAKEN AT THE GREATEST POINTS OF EACH GIVEN ROOM (AS IF THE ROOM WERE A PERFECT RECTANGLE), WITHOUT REGARD FOR ANY CUTOUTS. ACCORDINGLY, THE AREA OF THE ACTUAL ROOM WILL TYPICALLY BE SMALLER THAN THE PRODUCT OBTAINED BY MULTIPLYING THE STATED LENGTH AND WIDTH. ALL DIMENSIONS ARE APPROXIMATE AND MAY VARY WITH ACTUAL CONSTRUCTION, AND ALL FLOOR PLANS AND DEVELOPMENT PLANS ARE SUBJECT TO CHANGE. COPYRIGHT 2019, INVESCA DEVELOPMENT GROUP. ALL RIGHTS RESERVED.

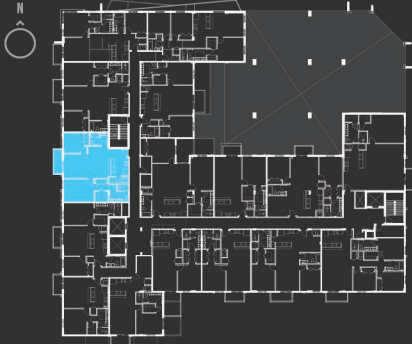
UNIT PRICE: \_\_\_\_\_  
 LEVEL: \_\_\_\_\_

**T-5**

**2 BED  
 2 BATH**

INTERIOR: 1151 S.F.  
 EXTERIOR: 13'-6" X 5'-0"

KEY PLAN



\*Different Layout LEVEL 7 ONLY

\*Dimensions and square footage are approximate, will vary with specific unit or level, and may vary with actual construction.

**LEVEL 7**



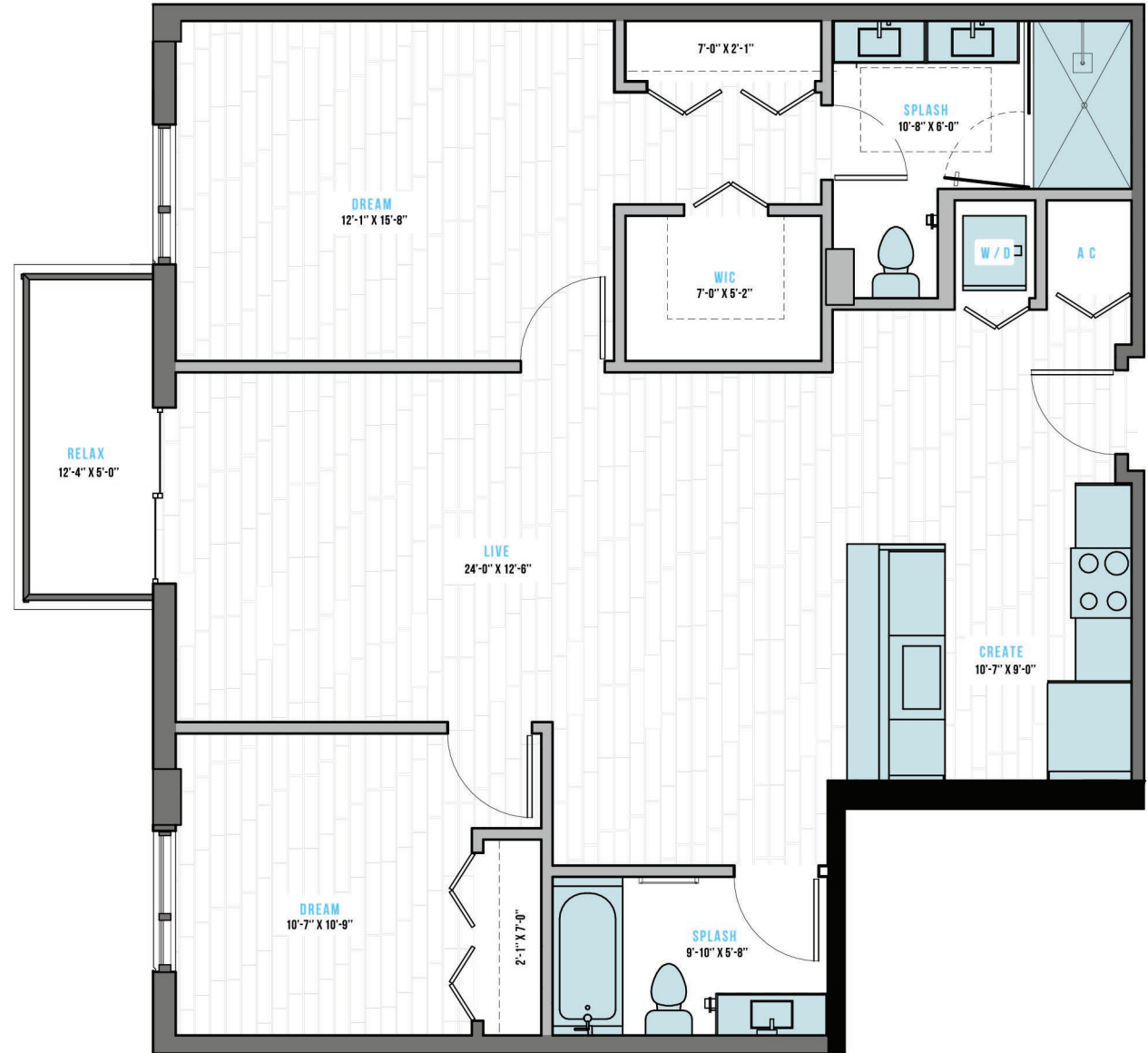
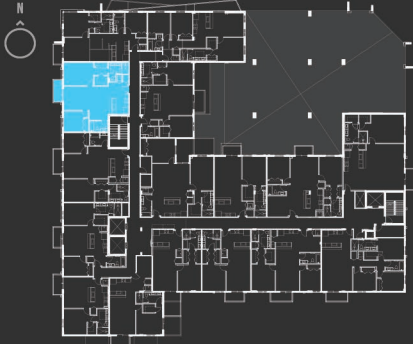


**T-6**

**2 BED  
 2 BATH**

INTERIOR: 1136 S.F.  
 EXTERIOR: 12'-4" X 5'-0"

KEY PLAN



**LEVEL 5,6 &7**

UNIT PRICE: \_\_\_\_\_  
 LEVEL: \_\_\_\_\_

**T-7**

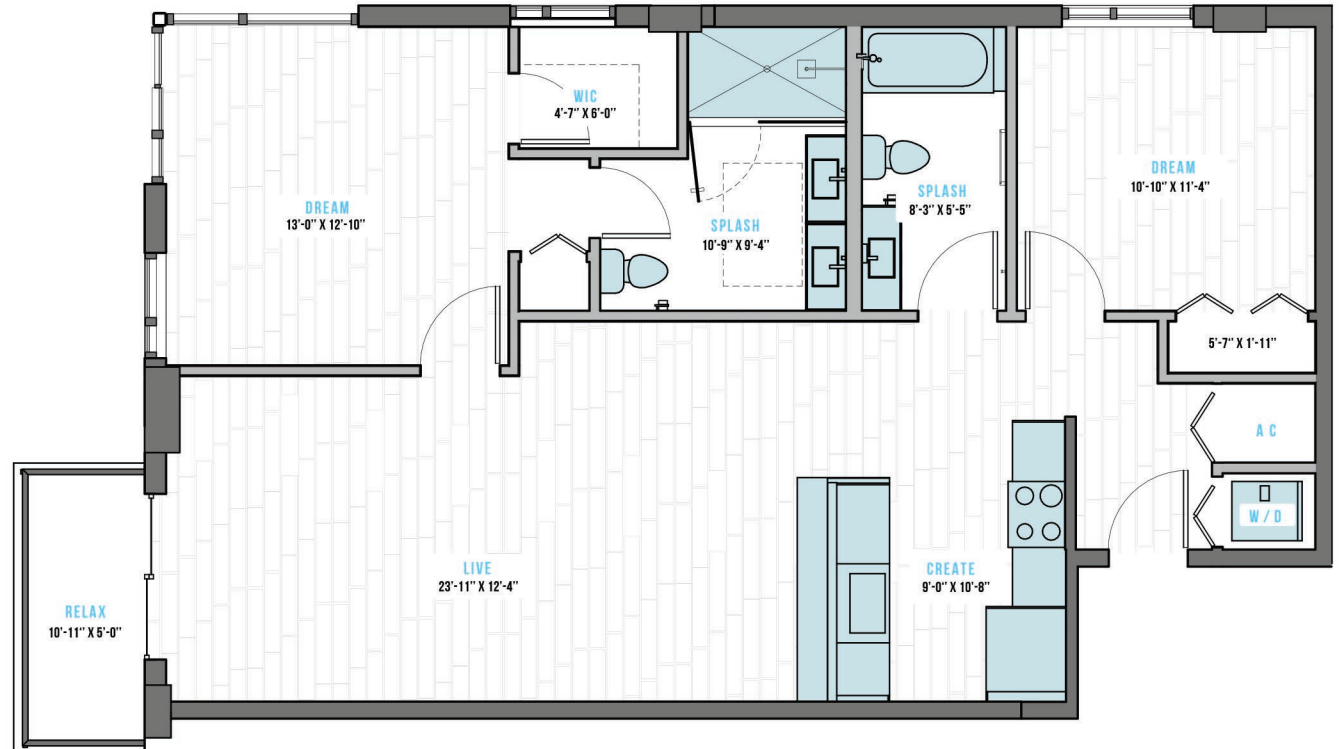
**2 BED  
 2 BATH**

INTERIOR: 1,060 S.F.  
 EXTERIOR: 10'-11" X 5'-0"

**KEY PLAN**



\*Dimensions and square footage are approximate, will vary with specific unit or level, and may vary with actual construction.



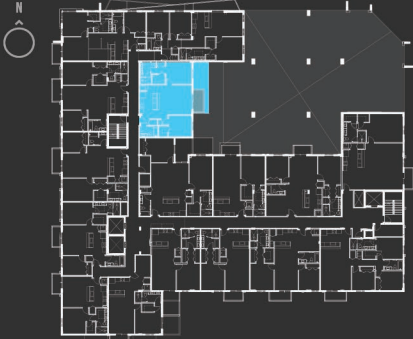
**LEVEL 5 & 7**

**T-8**

**2 BED  
 2 BATH**

INTERIOR: 1076 S.F.  
 EXTERIOR: 27'-0" X 8'-0"\*

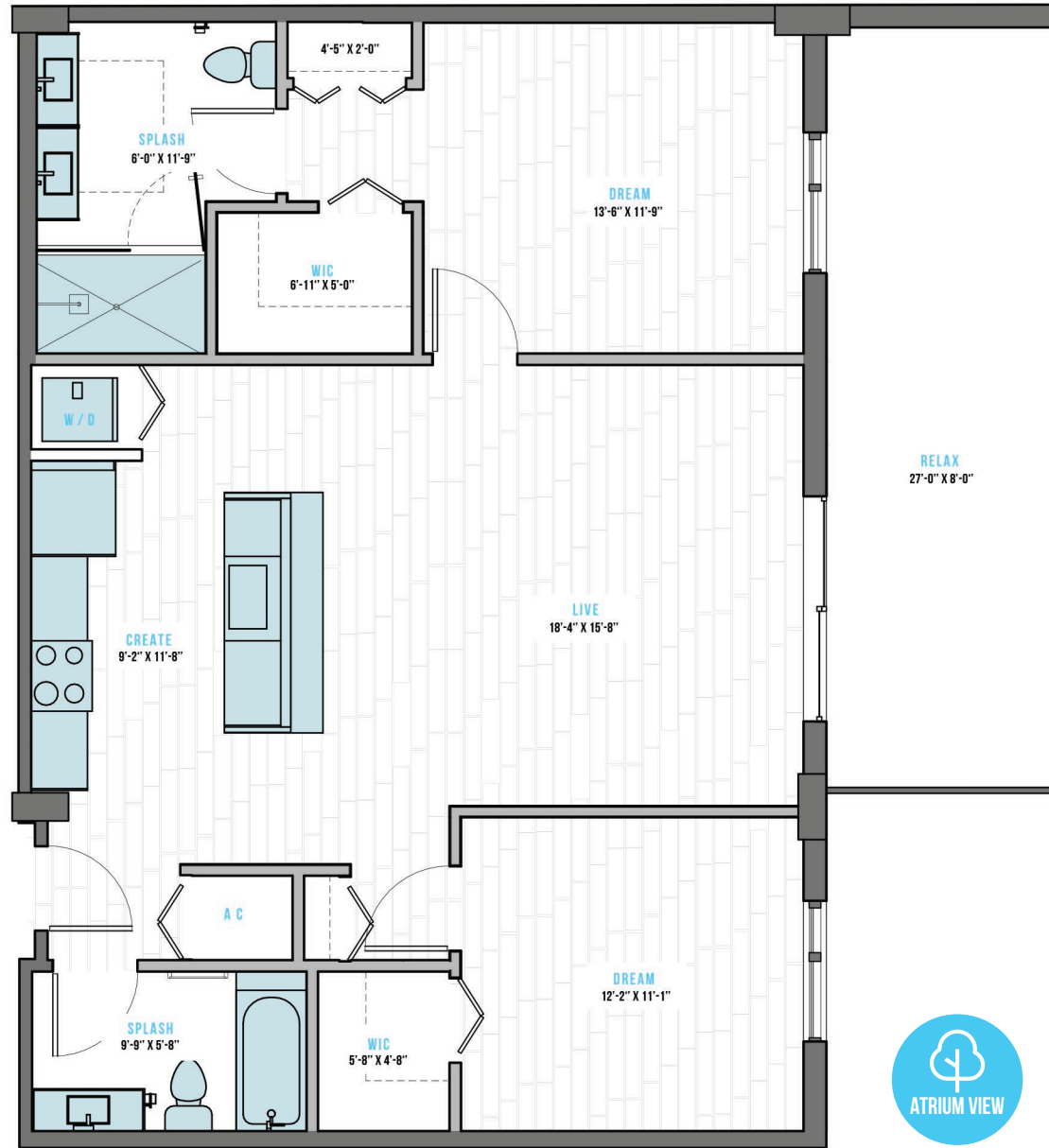
KEY PLAN



\*Bigger Balcony only available in Level 5.

\*Dimensions and square footage are approximate, will vary with actual construction.

**LEVEL 5,6 &7**

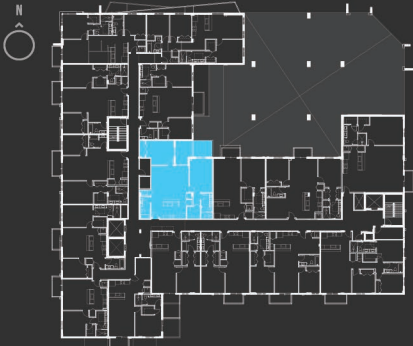


T-9

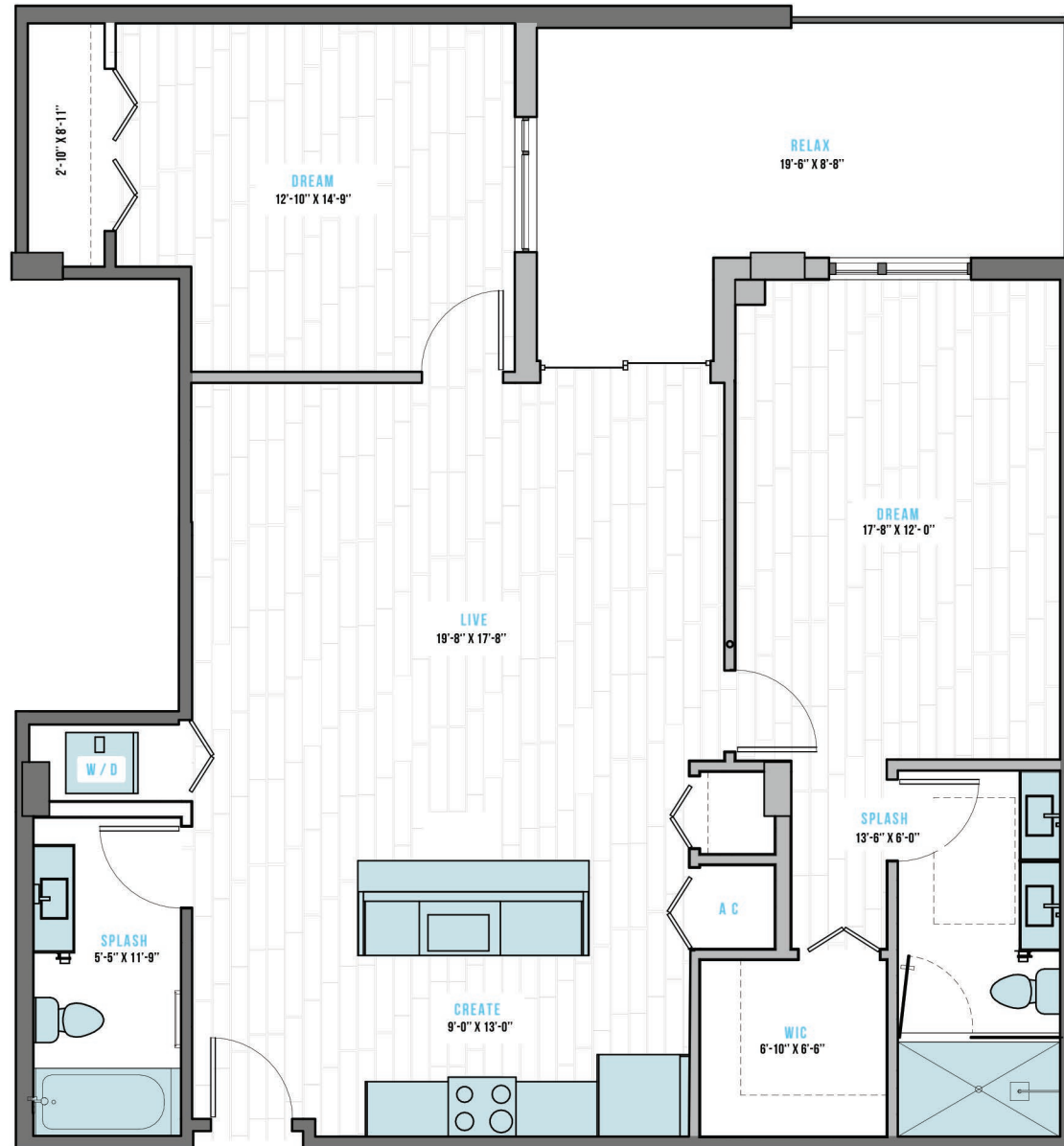
**2 BED  
 2 BATH**

INTERIOR: 1,241 S.F.  
 EXTERIOR: 19'-6" X 8'-8"

KEY PLAN



\*Dimensions and square footage are approximate, will vary with actual construction.



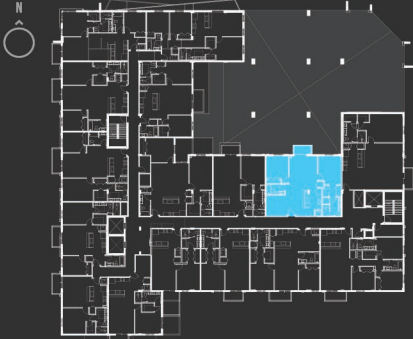
**LEVEL 5,6 &7**

**T-10**

**2 BED  
 2 BATH**

INTERIOR: 1235 S.F.  
 EXTERIOR: 10'-0" X 5'-0"

**KEY PLAN**

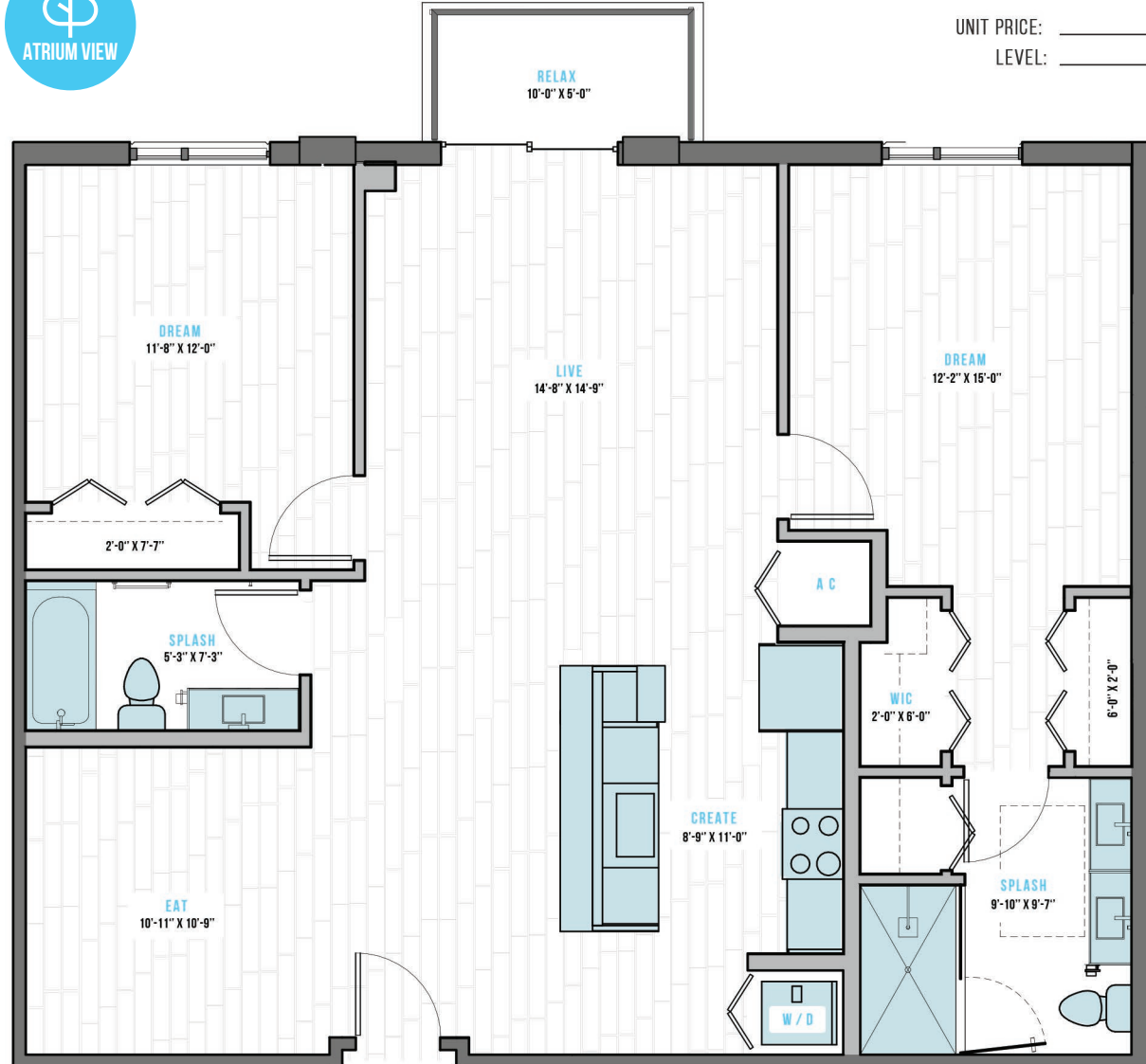


\*Dimensions and square footage are approximate, will vary with actual construction.

**LEVEL 5,6 &7**



UNIT PRICE: \_\_\_\_\_  
 LEVEL: \_\_\_\_\_



UNIT PRICE: \_\_\_\_\_  
 LEVEL: \_\_\_\_\_

**T-11**

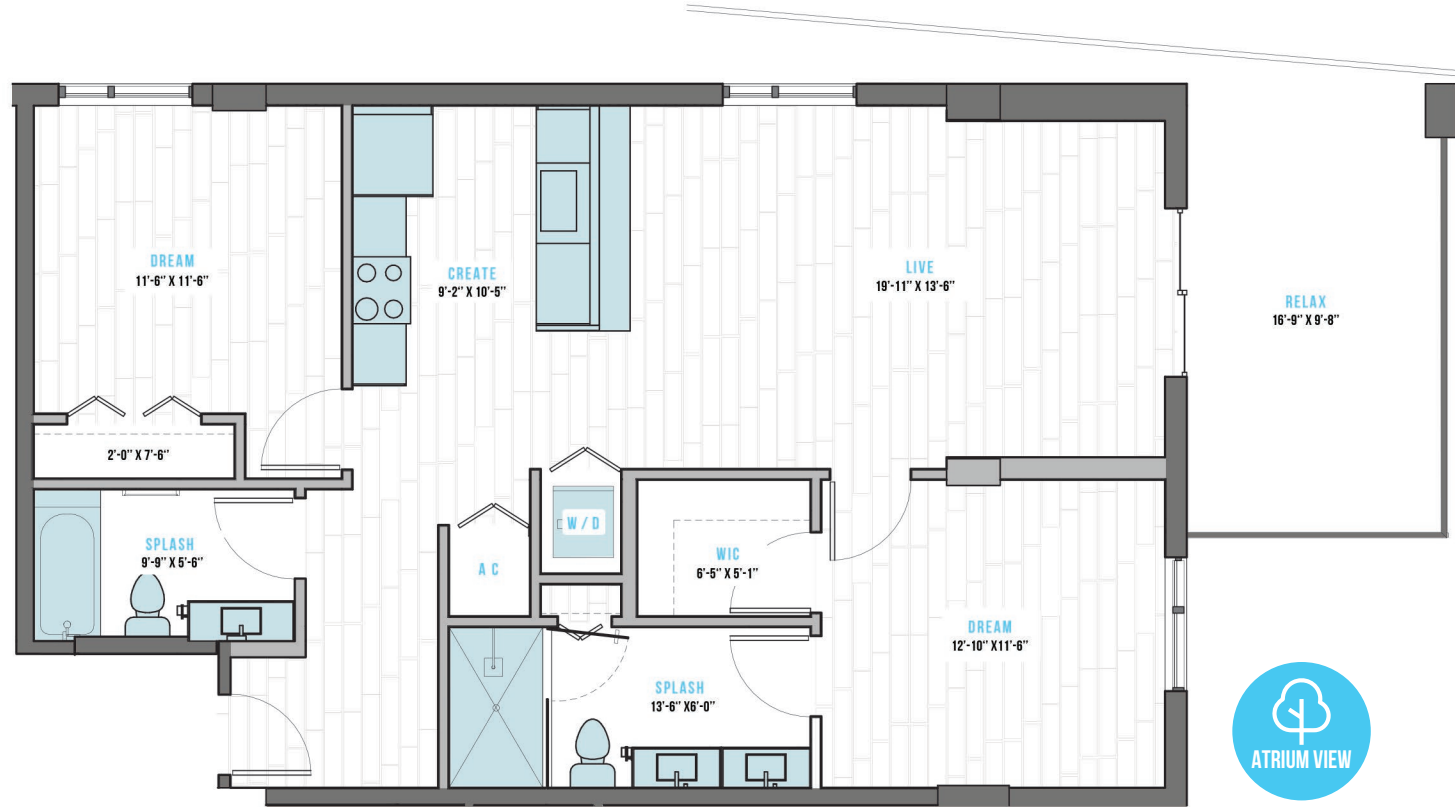
**2 BED  
 2 BATH**

INTERIOR: 1036 S.F.  
 EXTERIOR: 16'-5" X 9'-8"

KEY PLAN



\*Dimensions and square footage are approximate, will vary with actual construction.



**LEVEL 6**

ENVYPOMPANOBEACH.COM

INVESCA

STATED DIMENSIONS ARE MEASURED TO THE EXTERIOR BOUNDARIES OF THE EXTERIOR WALLS AND THE CENTERLINE OF INTERIOR DEMISING WALLS, AND, IN FACT, VARY FROM THE DIMENSIONS THAT WOULD BE DETERMINED BY USING THE DESCRIPTION AND DEFINITION OF THE "UNIT" SET FORTH IN THE DECLARATION (WHICH GENERALLY ONLY INCLUDES THE INTERIOR AIRSPACE BETWEEN THE PERIMETER WALLS AND EXCLUDES INTERIOR STRUCTURAL COMPONENTS). FOR YOUR REFERENCE, THE AREA OF THE UNIT, DETERMINED IN ACCORDANCE WITH THOSE DEFINED UNIT BOUNDARIES, IS + OR - THE SQ. FT. FOR THE TWO STORY TOWNHOME UNITS. NOTE THAT MEASUREMENTS OF ROOMS SET FORTH ON THIS FLOOR PLAN ARE GENERALLY TAKEN AT THE GREATEST POINTS OF EACH GIVEN ROOM (AS IF THE ROOM WERE A PERFECT RECTANGLE), WITHOUT REGARD FOR ANY CUTOUTS. ACCORDINGLY, THE AREA OF THE ACTUAL ROOM WILL TYPICALLY BE SMALLER THAN THE PRODUCT OBTAINED BY MULTIPLYING THE STATED LENGTH AND WIDTH. ALL DIMENSIONS ARE APPROXIMATE AND MAY VARY WITH ACTUAL CONSTRUCTION, AND ALL FLOOR PLANS AND DEVELOPMENT PLANS ARE SUBJECT TO CHANGE. COPYRIGHT 2019, INVESCA DEVELOPMENT GROUP. ALL RIGHTS RESERVED.

UNIT PRICE: \_\_\_\_\_  
 LEVEL: \_\_\_\_\_

**T-12**

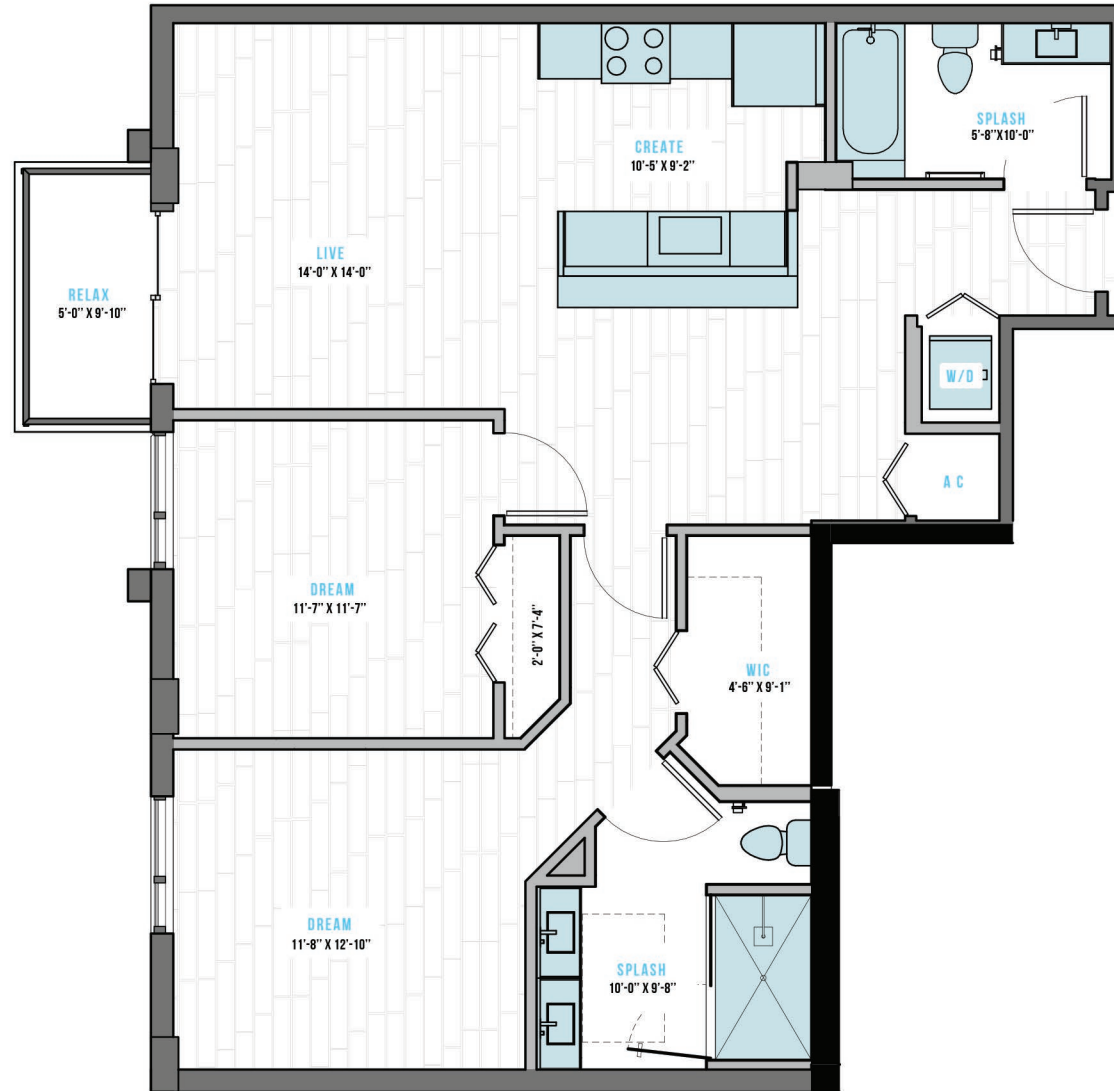
**2 BED  
 2 BATH**

INTERIOR: 1052 S.F.  
 EXTERIOR: 5'-0" X 9'-10"

KEY PLAN



\*Dimensions and square footage are approximate, will vary with actual construction.



**LEVEL 8, 9 & 11**

**T-13**

**2 BED  
 2 BATH**

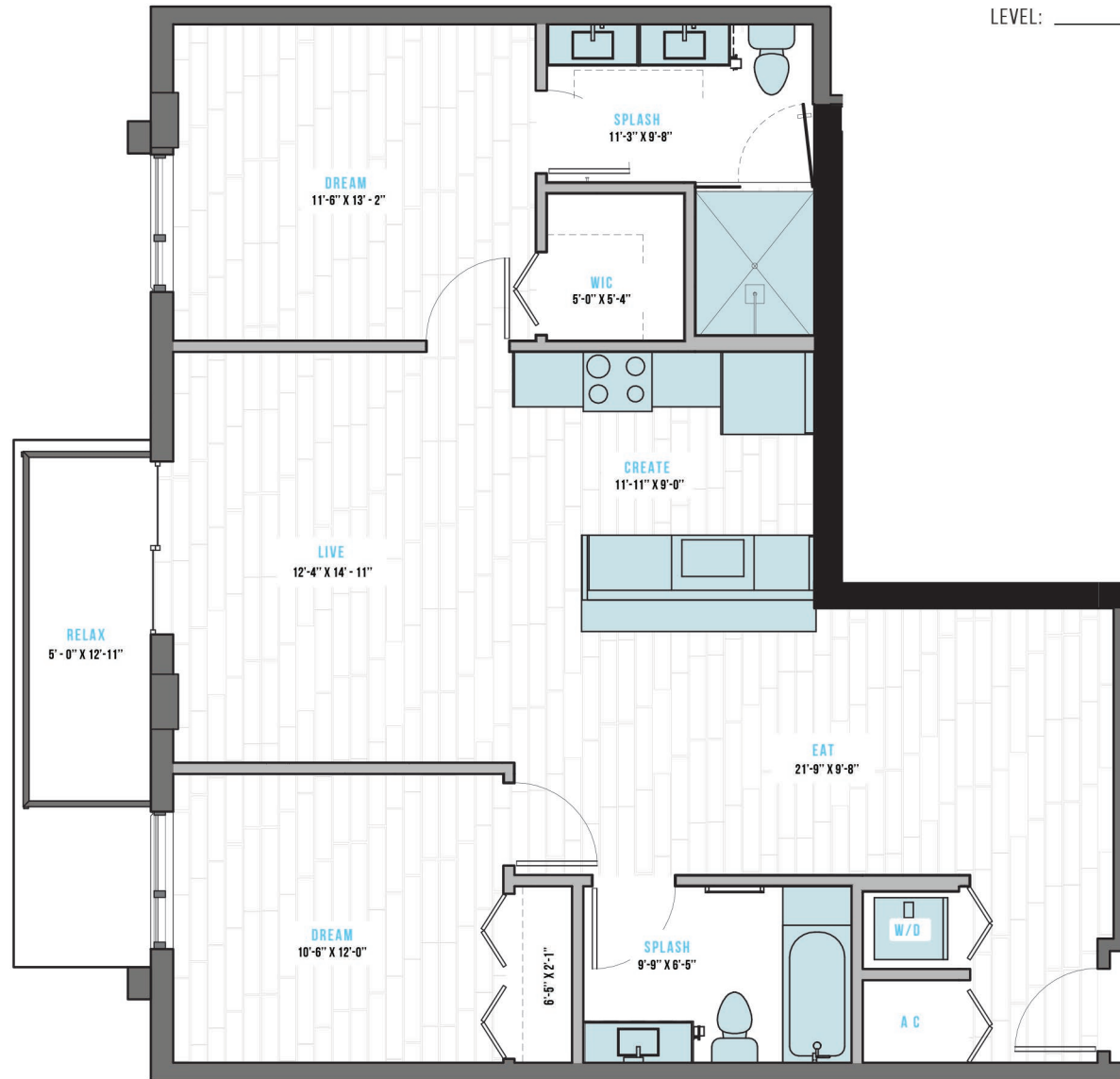
INTERIOR: 1056 S.F.  
 EXTERIOR: 5'-0" X 12'-11"

**KEY PLAN**



\*Dimensions and square footage are approximate, will vary with actual construction.

**LEVEL 8,9,10 & 11**



UNIT PRICE: \_\_\_\_\_  
 LEVEL: \_\_\_\_\_



UNIT PRICE: \_\_\_\_\_

LEVEL: \_\_\_\_\_

**T-14**

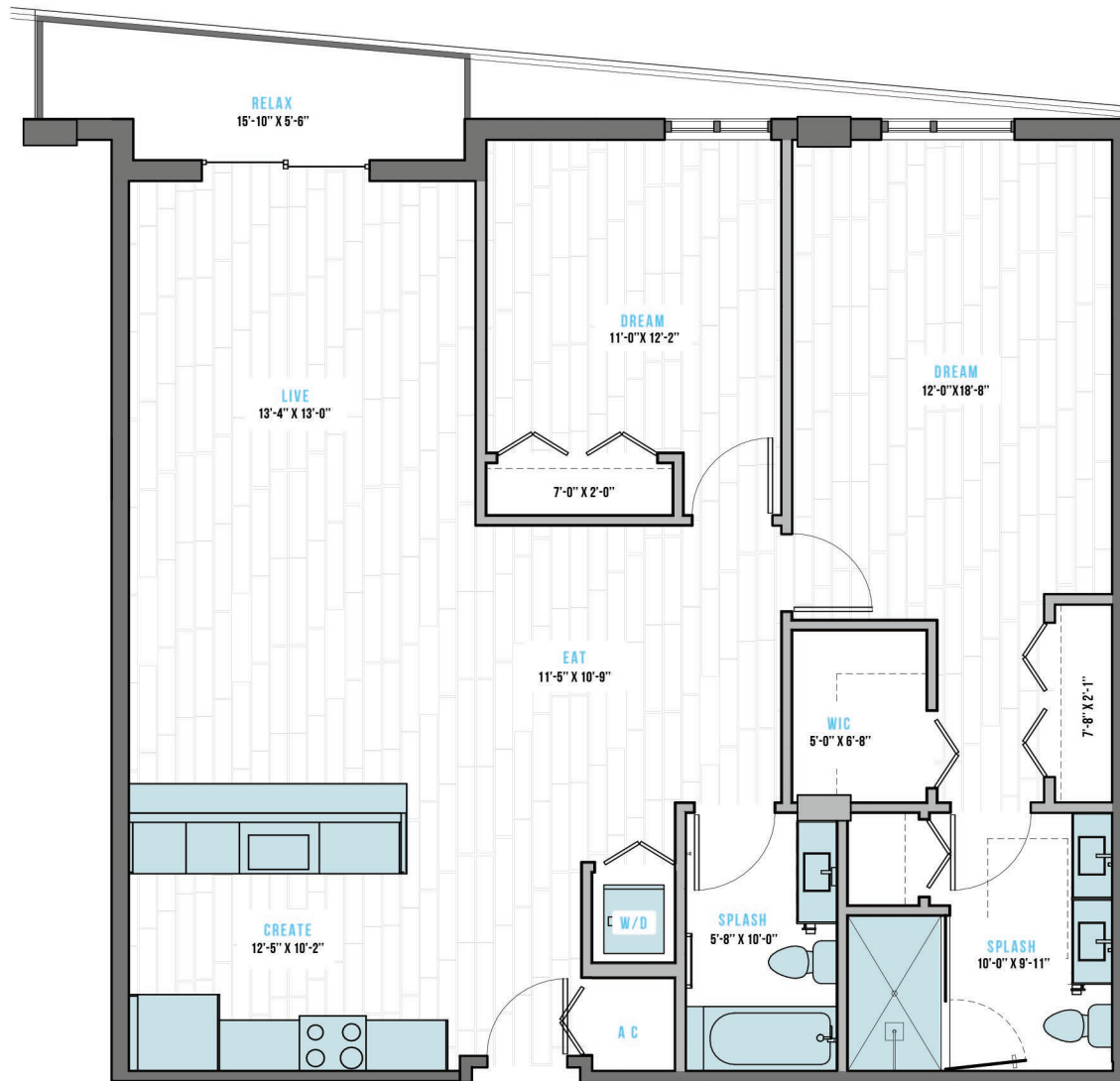
**2 BED  
 2 BATH**

INTERIOR: 1,308 S.F.  
 EXTERIOR: 5'-0" X 9'-10"

KEY PLAN



\*Dimensions and square footage are approximate, will vary with actual construction.

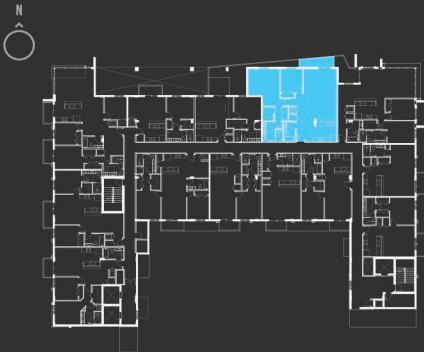


**LEVEL 8 & 10**

**T-15**
  
**2 BED**
  
**2 BATH**

INTERIOR: 1,427 S.F.
   
 EXTERIOR: 17'-0" X 5'-6"

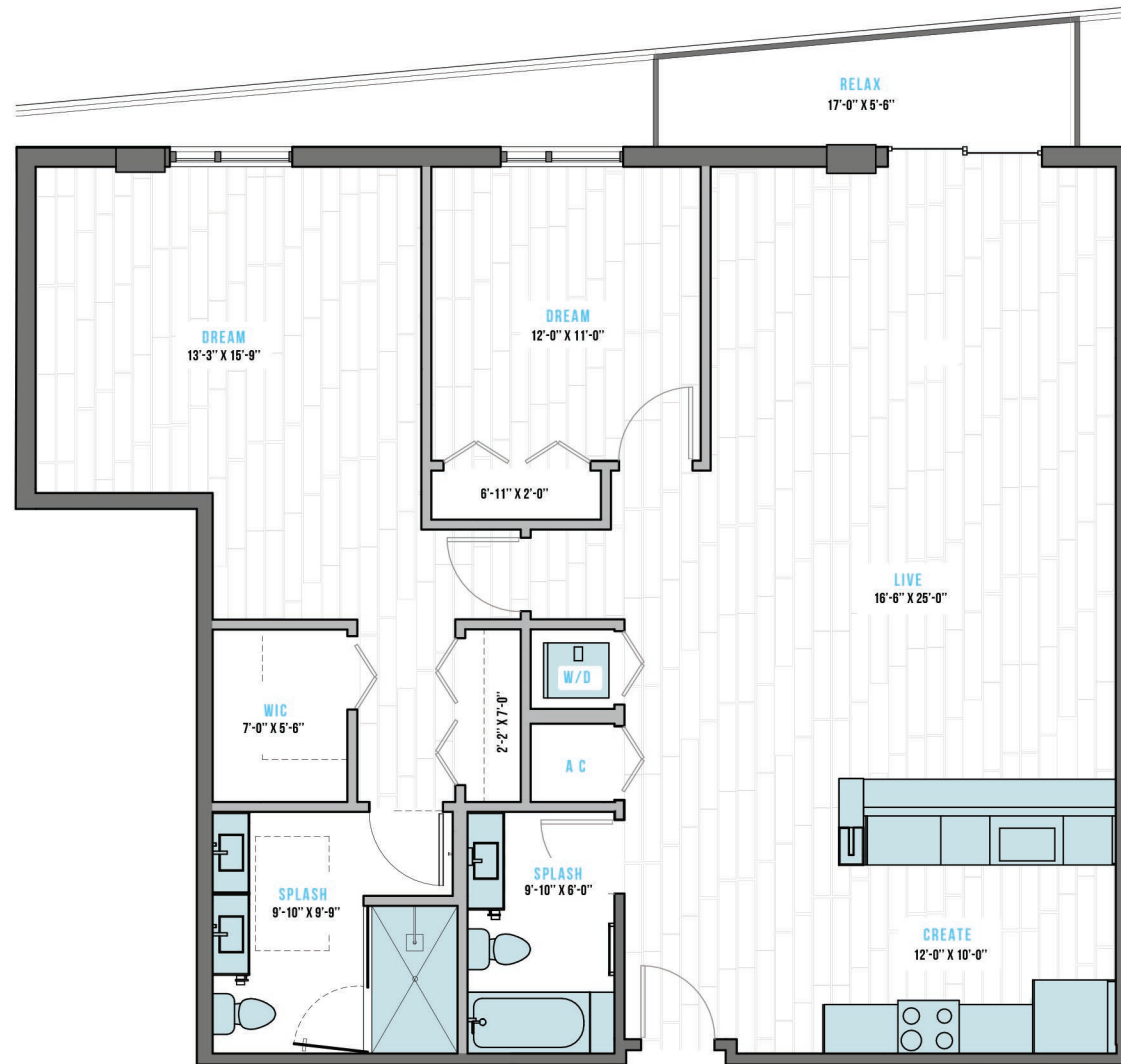
KEY PLAN



\*Dimensions and square footage are approximate, will vary with actual construction.

LEVEL 9 & 11

UNIT PRICE: \_\_\_\_\_
   
 LEVEL: \_\_\_\_\_



**T-16**  
**2 BED**  
**2 BATH**

INTERIOR: 1,304 S.F.  
 EXTERIOR: 13'-9" X 10'-4"\*

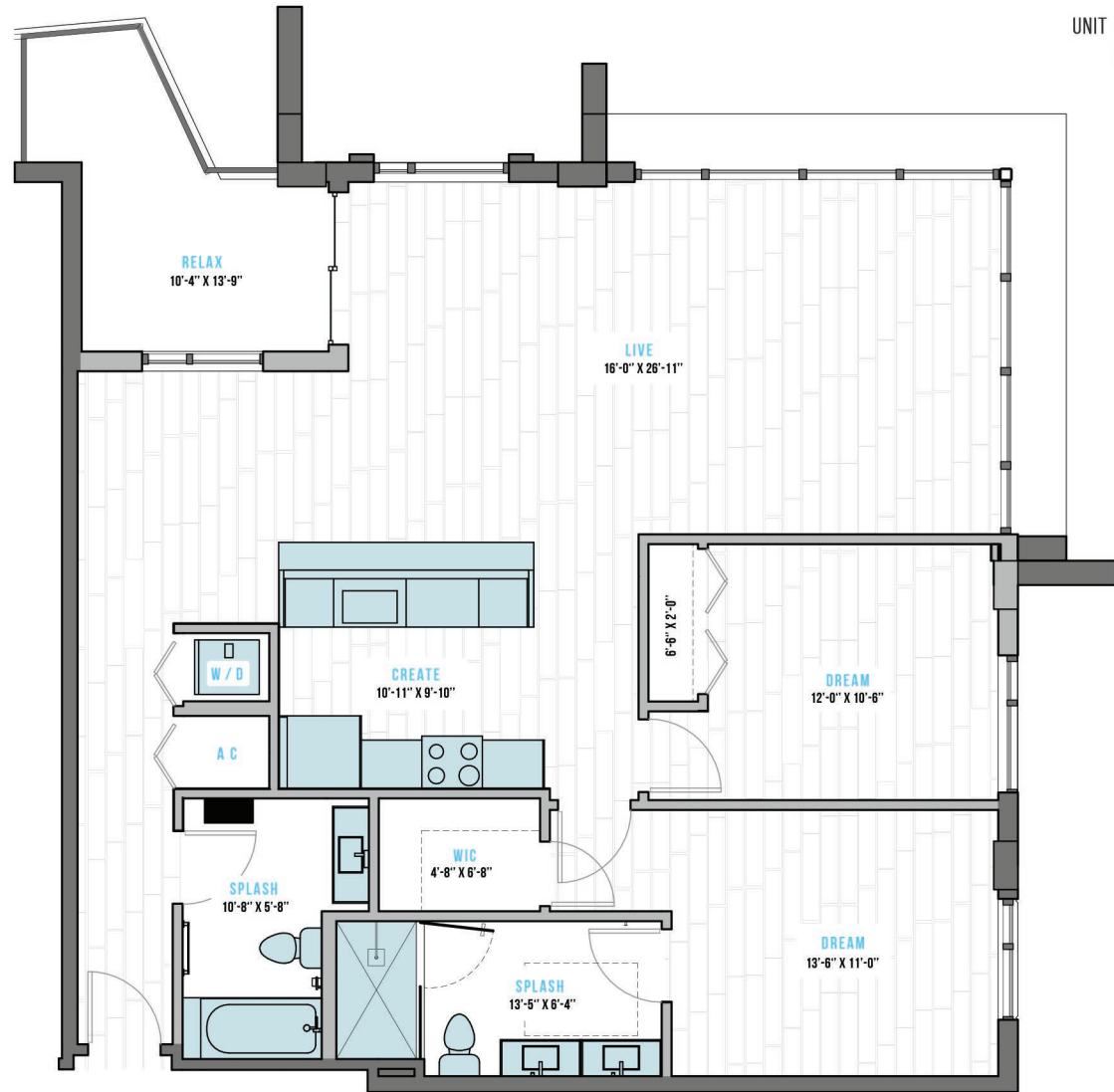
**KEY PLAN**



\*Bigger Balcony available in Levels 9 and 11.

\*Dimensions and square footage are approximate, will vary with actual construction.

**LEVEL 8,9,10 & 11**



UNIT PRICE: \_\_\_\_\_  
 LEVEL: \_\_\_\_\_

UNIT PRICE: \_\_\_\_\_  
 LEVEL: \_\_\_\_\_

**T-17**

**2 BED  
 2 BATH**

INTERIOR: 1,192 S.F.  
 EXTERIOR: 10'-0" X 5'-0"

**KEY PLAN**



\*Dimensions and square footage are approximate, will vary with actual construction.

**LEVEL 10**

